

SAP Logon Guide

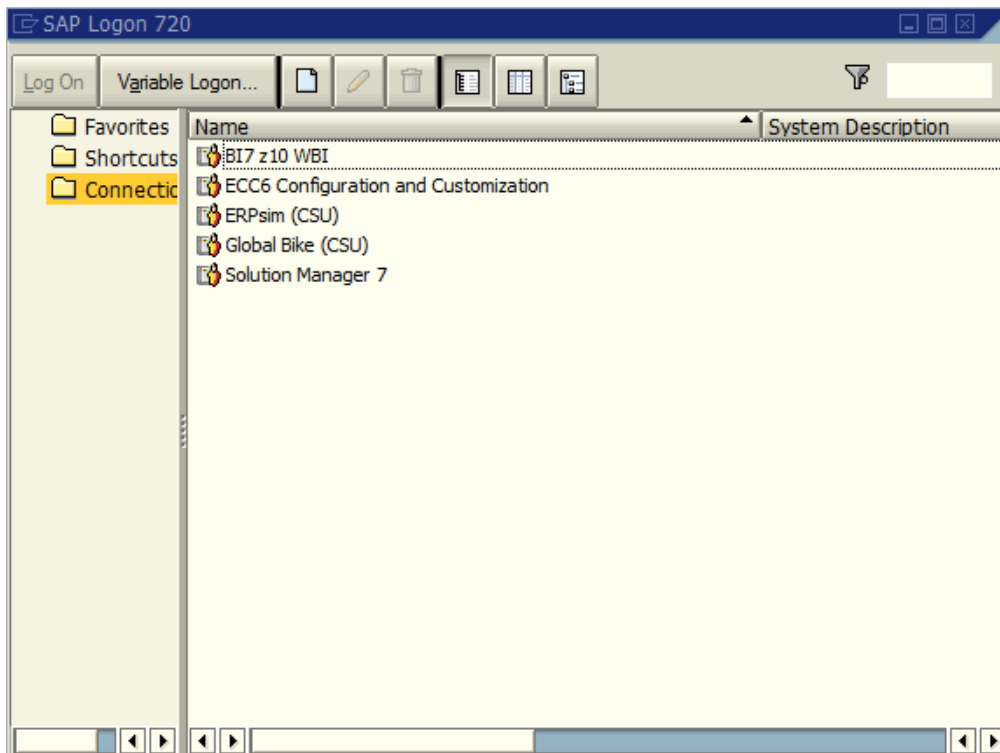
Access to the SAP system will be via remote desktop connection. Remote access documentation can be found at the following link:

http://enterprise.waltoncollege.uark.edu/Remote_Desktop_SAP_GW.pdf

The desktop is your starting point to access the SAP system. Double-click on SAP Logon. See arrow in image below.



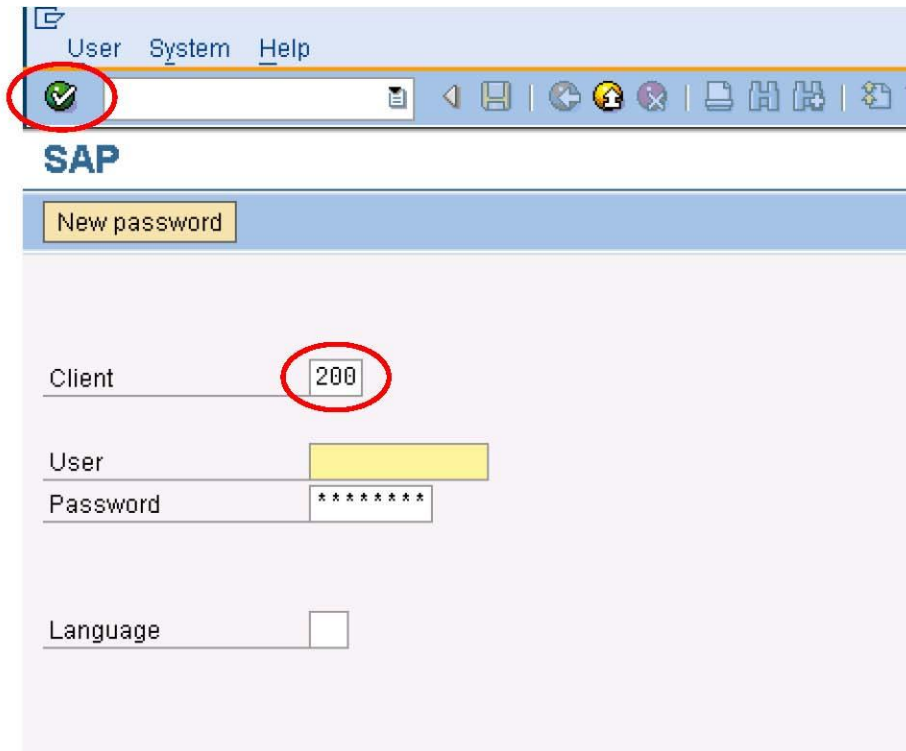
You should see a screen as shown below. Select "BI7 z10 WBI" and click "Log On".



Enter the Username and Password provided to you.

Note: Ensure that you are using the client provided to you

Click the green check mark button to login.



If you have problems with this process, please contact us at entsys@uark.edu.

Also, if you would like to use the system for your class and would like to request student accounts, please note the following link:

<http://enterprise.waltoncollege.uark.edu/Solutions/default.aspx?pic=SAP>