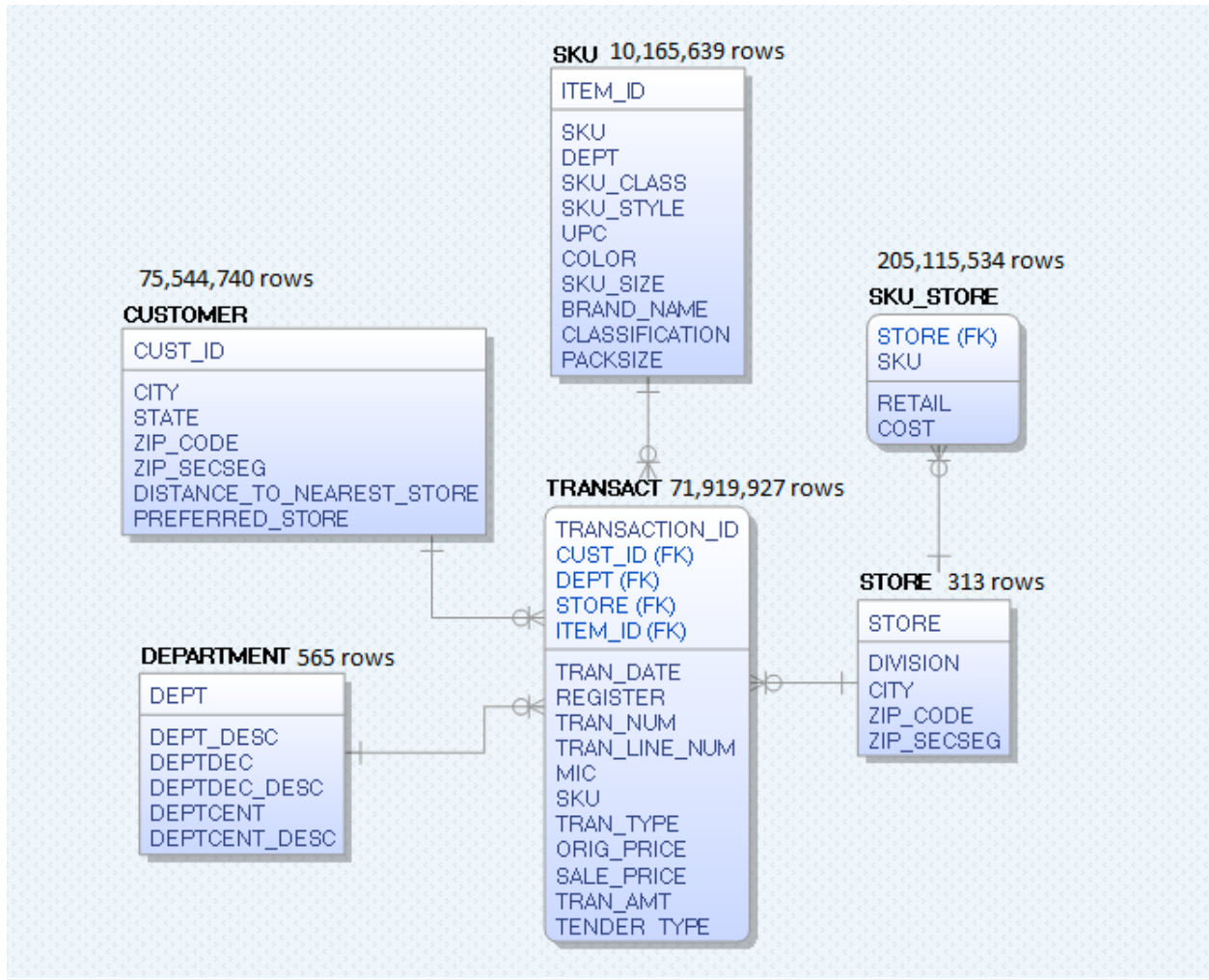


Dillard's Database

Entity Relationship Diagram: ua_dillards_2016



Data Dictionary

Department:

Abbreviation	Term Name	Short Description	Long Description
DEPTCENT	Century	The first digit of a department code, a way to classify departments at a higher level	Values include 00XX (Cosmetics), 01XX (Ready-to-Wear), 02XX (Lingerie/Accessories), 03XX (Juniors), 04XX (Childrens), 05XX (Mens), 06XX (Shoes), 07XX (Home Decor), and 08XX (Big Ticket).
DEPTCENT_DESC	Century Description	The descriptive name of a century.	Display values (and their corresponding Century values) include COSMETICS (00XX), READY-TO-WEAR (01XX), LING/ACCESS (02XX), JUNIORS (03XX), CHILDRENS (04XX), MENS (05XX), SHOES (06XX), DECOR. HOME (07XX), and BIG TICKET (08XX).
DEPT_DESC	Department Description	The name for a department collection of merchandise within a store format.	Some departments are considered classification departments (Dept 0234) TAILORED FASHION, (Dept 0254) Belts While other departments are Brand Departments (Dept 0262) Spanx, (Dept 0024) Kiehls
DEPT	Department	The Dillard's unique identifier for a collection of merchandise within a store format.	Possible values include 0012, 0123, 0244, 0323, 0456, 0533, 0686, 0711, 0844
DEPTDEC_DESC	Decade Description	Descriptive name representing the decade to which a department belongs.	Possible values include (056X) Mens Pants, (026X) Hosiery, (004X) Mens Cosmetics
DEPTDEC	Decade	The first and second digit of a department code, a way to classify departments at a higher level.	Possible values include 056X, 026X, 004X

SKU:

Abbreviation	Term Name	Short Description	Long Description
SKU	Stock Keeping Unit	Dillard's assigned number that identifies an item by size within a color of a style for a vendor.	
ITEM_ID	Item_Id	The identifier for a unique item.	A surrogate key generated and maintained by the data warehouse that is a pointer to a unique instance of a SKU
DEPT	Department	The Dillard's unique identifier for a collection of merchandise within a store format.	
SKU_CLASS	Class	Three character alpha/numeric classification code used to define the merchandise in AIMS. Class requirements vary by department	
SKU_STYLE	Style	The Dillard's numeric identifier for a style of merchandise.	
UPC	Universal Product Code	A number provided by vendors to identify their product to the size level. UPCs are made up of a leading zero followed by the 6-digit vendor code and a number to identify the item.	
COLOR	Color	Color of an item	
SKU_SIZE	Size	Size of an item.	Product sizes are not standardized and issued by vendor
BRAND_NAME	Brand	Descriptive name that represents the brand name that has been assigned to a MIC within a Department. Defaults to Vendor Name if no other value has been provided.	
CLASSIFICATION	Classification	Product Classification	Used to sort products into logical groups: Dress, Shoe, Watch, Earring, etc.

SKU_STORE:

Abbreviation	Term Name	Short Description
SKU	Stock Keeping Unit	Dillard's assigned number that identifies an item by size within a color of a style for a vendor.
STORE	Store	The numerical identifier for any type of Dillard's location.
COST	Cost	The price charged by a vendor for a product
RETAIL	Current Retail	The current price of an item

STORE: Store 698 (Maumelle) services the online orders

Abbreviation	Term Name	Short Description
STORE	Store	The numerical identifier for any type of Dillard's location.
DIVISION	Division	The division to which a location is assigned for operational purposes.
CITY	City	The city name of a location address.
STATE	State	The state abbreviation of a location address.
ZIP CODE	Zip Code	The 5 digit zip code of a location address
ZIP_SECSEG	Zip_Secseg	The 4 digit code of a neighborhood within a specific zip code

TRANSACTION:

Abbreviation	Term Name	Short Description	Long Description
TRANS_DATE	Transaction_Date	Calendar date the transaction occurred in a store	
STORE	Store	The numerical identifier for any type of Dillard's location.	
REGISTER	Register	Device used to ring sales	
TRANS_NUM	Transaction Number	Sequential number of transactions rang on a register	
TRANS_TIME	Transaction Time	Time of day the transaction occurred	
CUST_ID	Customer Identifier	Surrogate key created and maintained by the data warehouse representing a unique instance of a customer.	An individual may actually exist in the database more than once but with different attributes. For example the first name may be abbreviated or the last name may be different, etc.
TRANS_LINE_NUM	Transaction Line Number	Sequential number of each element of a transaction	A trans_line_number is incremented for each element of a transaction or receipt. Each SKU rang is assigned a unique line number, sales tax is also a line item
DEPT	Department	The Dillard's unique identifier for a collection of merchandise within a store format.	
MIC	Manufacturer Identification Code	Manufacturer Identification Code used to uniquely identify a vendor or brand within a department.	
SKU	Stock Keeping Unit	Dillard's assigned number that identifies an item by size within a color of a style for a vendor.	
QTY	Quantity	The number of a specific SKU	
TRANS_TYPE	Transaction Type	An identifier for a 'P'urchase or 'R'eturn type of transaction or line item	
TRANS_AMT	Transaction Amount	The transaction total the customer paid for the merchandise	Trans Amt includes sales tax, delivery fees and any other line item required by the transaction
TENDER_TYPE	Tender Type	The specific instrument the customer used to complete the transaction	Cash, check, credit, gift cards, return

CUSTOMER:

Abbreviation	Term Name	Short Description	Long Description
CUST_ID	Customer Identifier	Surrogate key created and maintained by the data warehouse representing a unique instance of a customer.	An individual may actually exist in the database more than once but with different attributes. For example the first name may be abbreviated or the last name may be different, etc.
CITY	Household City	City where the customer lives	
STATE	Household State	State where the customer lives	
ZIP_CODE	Household Zip Code	Customer's zip code	
ZIP_SECSEG	Household Zip Plus 4	4 digit number identifying a neighborhood for the customer	
DISTANCE_TO_NEAREST_STORE	Household Distance to Nearest Store	Miles from customer's house to the closest Dillard's store	
PREFERRED_STORE	Household Preferred Location Id	Dillard's store number the customer prefers to shop in regardless of distance to customer's address	