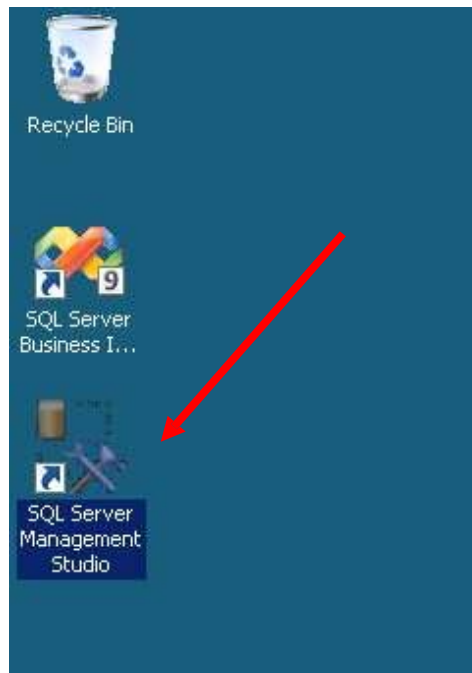


MEC Guide

Once you receive your University of Arkansas MEC account, access to the Enterprise Systems portal will be via remote desktop connection. Remote access documentation can be found at the following link:

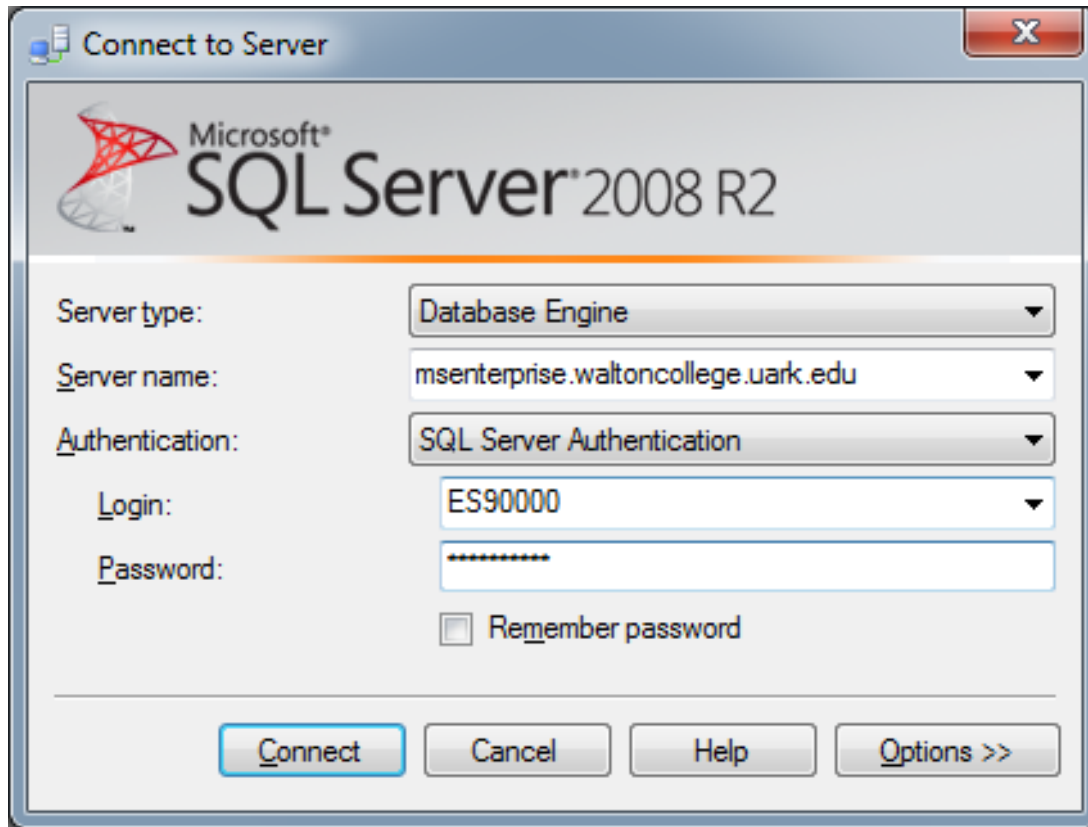
http://enterprise.waltoncollege.uark.edu/Remote_Desktop_MEC_GW.pdf

The desktop is your starting point to access the Microsoft SQL Server system. Double-click on SQL Server Management Studio icon...



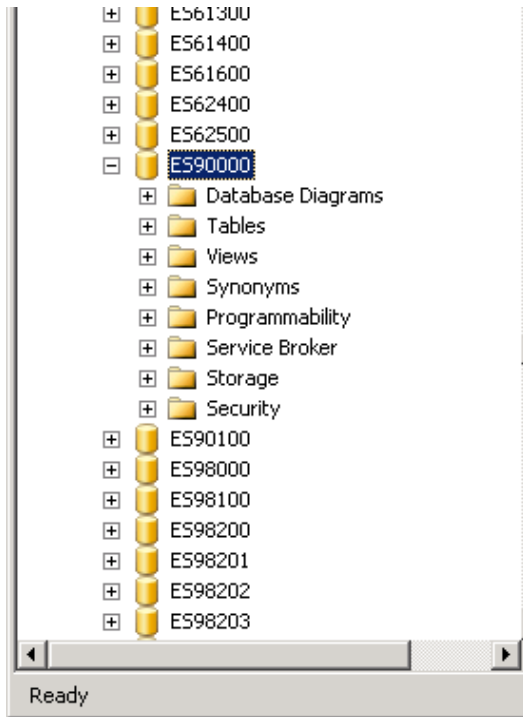
Connect to Server Information

- Server type: Database Engine
- Server name: msenterprise.waltoncollege.uark.edu
- Authentication: SQL Server Authentication



Click Connect and this will give you access to the Microsoft SQL Server system.

You will have a database like your username. This database is where you will create your own tables. For example, user ES90000 has full admin access to ES90000.



You also will have access to the following databases: Hallux, Dillard's, and different versions of Sam's Club. To get details of these databases, go to the <http://enterprise.waltoncollege.uark.edu/> and click on **Datasets**.