

# TUN Guide

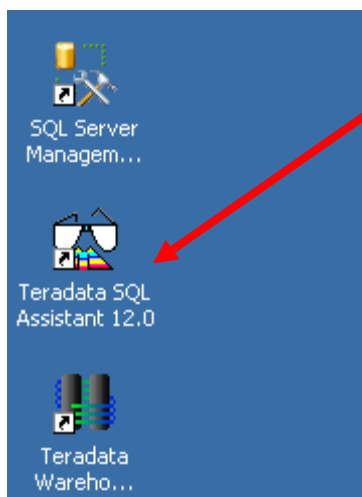
---

Thank you for registering with the University of Arkansas to access the Teradata system through the Teradata University Network. Access to the system will be via remote desktop connection. Remote access documentation is at the following link:

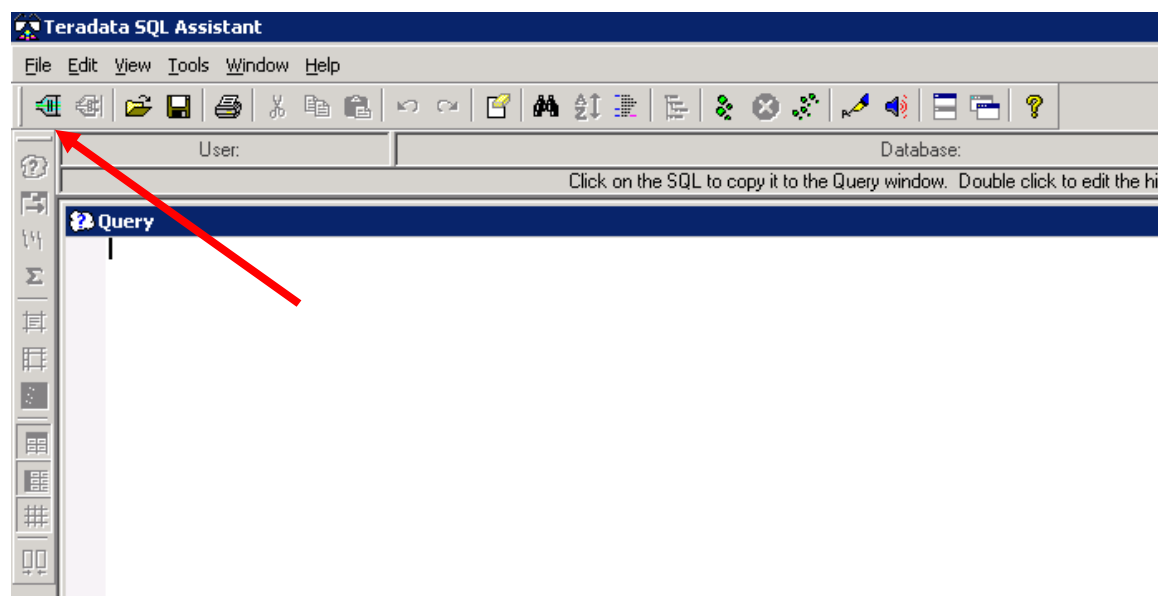
[http://enterprise.waltoncollege.uark.edu/Remote\\_Desktop\\_TUN\\_GW.pdf](http://enterprise.waltoncollege.uark.edu/Remote_Desktop_TUN_GW.pdf)

The desktop is your starting point to access the Teradata SQL Assistant and Teradata Warehouse Miner.

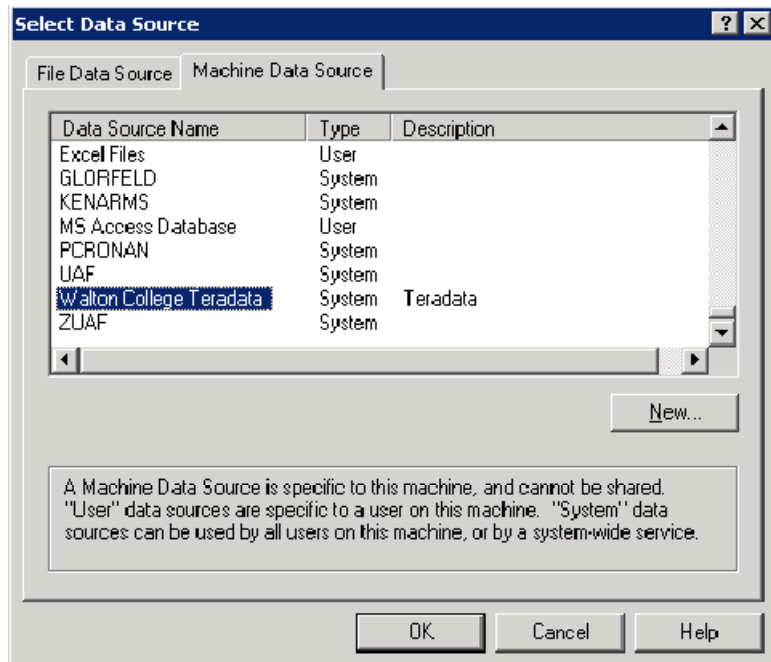
To access Teradata SQL Assistant, double-click on Teradata SQL Assistant...



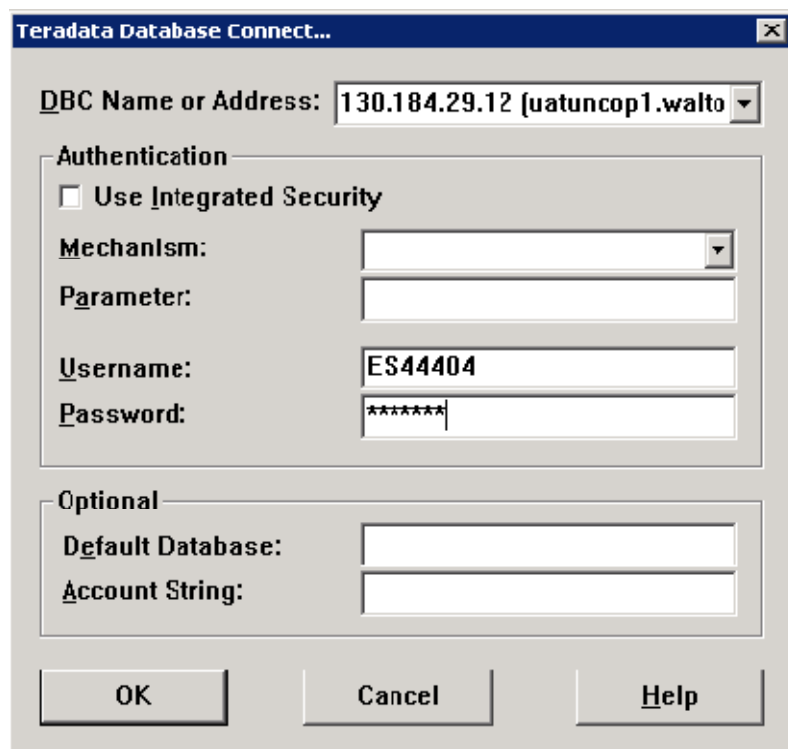
The application will open. Click on the “Connect Icon”. See arrow below.



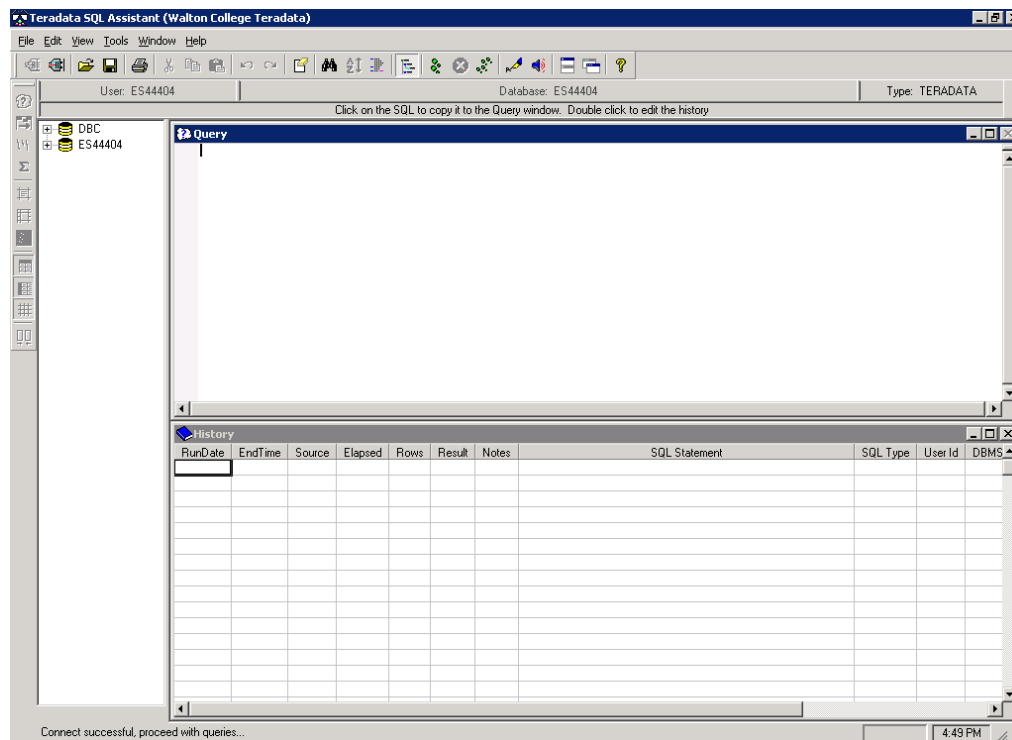
Select "Machine Data Source" tab. Select "Walton College Teradata" Data Source Name.



You will need to provide your Username and Password. See instructions above. Click OK.



You are now ready to start the process of running queries in the Teradata SQL Assistant.



From here you can add databases you want to use. You have access to the following databases:

UA\_DILLARDS  
UA\_HALLUX  
UA\_SAMSCLUB  
UA\_SAMSCLUB\_big  
UA\_SAMSCLUB\_small  
UA\_SAMSCLUB\_star

If you need help on using Teradata SQL Assistant, please click on the Help menu.

Click on the database descriptions to get the details for these databases.

Also, after receiving this e-mail you will be given access to the Solution Files for the Sample Queries and the Student Roster creation process. Please note the following links.

["http://enterprise.waltoncollege.uark.edu/Solutions/login.aspx?ReturnUrl=%2fsolutions%2fdefault.aspx%3fpic%3dTUN&pic=TUN"](http://enterprise.waltoncollege.uark.edu/Solutions/login.aspx?ReturnUrl=%2fsolutions%2fdefault.aspx%3fpic%3dTUN&pic=TUN) - (Solution Files & Roster Creation)

This process requires you to input your email address as you submitted to us and the following password to gain access to these screens.

E-mail: (e-mail address submitted on earlier registration)

Password: G4TWC@UA (All Uppercase)

If you have problems with this process, please contact the University of Arkansas.

Regards,  
University of Arkansas, Enterprise System Team