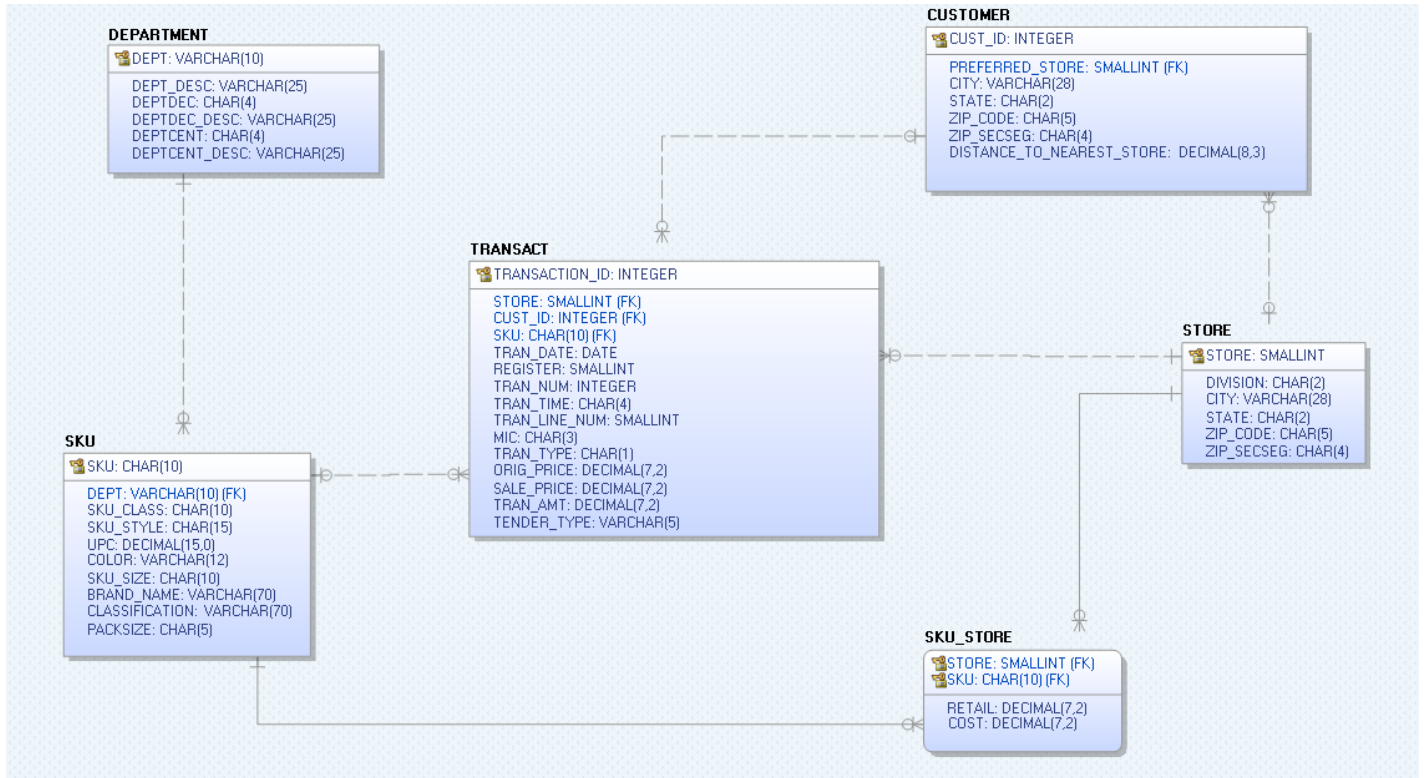


WCOB Dillard's Data Model and Data Dictionary

Background

This document provides information about the Dillard's 2018 database (WCOB_DILLARDS) residing on Walton college Teradata server.

Data model :



Below is the list of tables on this database, and the number of records in each table:

TABLE NAME	NUMBER OF RECORDS
CUSTOMER	75,544,740
DEPARTMENT	580
SKU	6,784,378
SKUSTORE	164,178,473
STORE	313
TRANSACT	107,572,906

CUSTOMER table:

Column name	Key specifications	Datatype	Short description	Long description	Sample values
CUST_ID	Primary key	Integer (not null)	Customer Identifier	Unique identifier representing a customer instance	219948527 219930818
CITY		Varchar (28)	City	City where the customer lives.	HOUSTON COOS BAY

STATE		Char(2)	State	State where the customer lives.	FL TX
ZIP_CODE		Char(5)	Zip code	Customer's 5-digit zip code.	72701 84770
ZIP_SECSEG		Char(4)	Sector segment code	Customer's geographic segment code	5052 6474
DISTANCE_TO_NEAREST_STORE		Decimal(8,3)	Distance to nearest store for customer	Miles from the customer's house to the closest Dillard's store.	0.687 6.149
PREFERRED_STORE	Foreign Key (References STORE table)	Small Int	Customer Preferred Store Location	Dillard's store number the customer prefers to shop at regardless of distance to the customer's home address.	910 774

DEPARTMENT table:

Column name	Key specifications	Datatype	Short description	Long description/ Additional Details	Sample values
DEPT	Primary key	Varchar (10), not null	Department Number	The Dillard's unique identifier for a collection of merchandise within a store format	0471 0029
DEPT_DESC		Varchar (25)	Department Description	The name for a department collection of merchandise within a store format.	"Christian Dior" "REBA"
DEPTDEC		Char(4)	Department Decade	The first three digits of a department code, a way to classify departments at a higher level.	047X 002X
DEPTDEC_DESC		Varchar (25)	Department Decade Description	Descriptive name representing the decade to which a department belongs.	'BASICS' 'TREATMENT'
DEPTCENT		Char(4)	Department Century	The first two digits of a department code, a way to classify departments at a higher level.	04XX 00XX
DEPTCENT_DESC		Varchar (25)	Department Century Description	The descriptive name of the century.	CHILDRENS COSMETICS

SKU table:

Column/ Field name	Key specifications	Datatype	Short description	Long description/ Additional Details	Sample values
SKU	Primary key	Char(10), Not null	Stock Keeping Unit	Unique identifier for an item, identifies the item by size within a color and style for a particular vendor.	0557578 6383039
DEPT	Foreign key (references DEPARTMENT table)	Varchar(10), Not null	Department Number	The Dillard's unique identifier for a collection of merchandise within a store format.	0134 0343
SKU_CLASS		Char(10)	Stock Keeping Unit Class	Three character alpha/numeric classification code used to define the merchandise. Class requirements vary by department.	K51 220
SKU_STYLE		Char(15)	Stock Keeping Unit Style	The Dillard's numeric identifier for a style of merchandise.	091923690 LBF41728
UPC		Decimal (15,0)	Universal Product Code	A number provided by vendors to identify their product to the size level.	889448437421 44212146767
COLOR		Varchar(12)	Stock Keeping Unit Color	Color of an item.	BLACK PINEBARK
SKU_SIZE		Char(10)	Stock Keeping Unit Size	Size of an item. Product sizes are not standardized and issued by vendor	6 085M
BRAND_NAME		Varchar(70)	Brand Name	The item's brand.	Stride Rite UNKNOWN
CLASSIFICATION		Varchar(70)	Classification	Category used to sort products into logical groups.	Dress Shoe
PACKSIZE		Char(5)	Item Package Size	Number that describes how many of the product come in a package	001 002

SKU_STORE table:

Column/ Field name	Key specifications	Datatype	Short description	Long description/ Additional Details	Sample values
STORE	Primary key,	Small Int, Not null	Store Number	The numerical identifier for a Dillard's store.	915 701

	Foreign key (references STORE table)				
SKU	Primary key Foreign key (references SKU table)	Char(10)	Stock Keeping Unit	Unique identifier for an item, identifies the item by size within a color and style for a particular vendor.	4305296 6137609
RETAIL		Decimal(7,2) Not null	Retail Price	The price of an item.	11.90 45.15
COST		Decimal(7,2) Not null	Item Cost	The price charged by a vendor for an item	8.51 44.84

STORE table:

Column/ Field name	Key specifications	Datatype	Short description	Long description/ Additional Details	Sample values
STORE	Primary Key	Small Int, Not null	Store	The numerical identifier for any type of Dillard's location.	767 460
DIVISION		Char(2)	Division	The division to which a location is assigned for operational purposes.	07 04
CITY		Varchar (28)	City	The city where the store is located.	IRVING MOBILE
STATE		Char (2)	State	The state abbreviation where the store is located.	MO AL
ZIP_CODE		Char (5)	Zip Code	The 5 digit zip code of a store's address.	70601 35801
ZIP_SECSEG		Char (4)	Zip Code Geographic Segment Code	The 4 digit code of a neighborhood within a specific zip code.	5052 6474

TRANSACTION table:

Column/ Field name	Key specifications	Datatype	Short description	Long description/ Additional Details	Sample values
TRANSACTION_ID	Primary key	Integer	Transaction Identifier	Unique numerical identifier for each scan of an item at a register.	40333797 15129264
TRAN_DATE		Date in format MM/DD/YYYY, not null	Transaction Date	Calendar date the transaction occurred in a store.	1/1/2015 5/19/2014
STORE	Foreign key (references STORE table)	Small Int Not null	Store	The numerical identifier for any type of Dillard's location.	716 205

REGISTER		Small Int Not null	Register	The numerical identifier for the register where the item was scanned.	91 55 12
TRAN_NUM		Integer Not null	Transaction Number	Sequential number of transactions scanned on a register.	184 14
TRAN_TIME		Char(4) Not null	Transaction Time	Time of day the transaction occurred.	1839 1536
CUST_ID	Foreign key (references CUSTOMER table)	Integer Not null	Customer Identifier	Unique identifier representing the instance of a customer.	118458688 115935775
TRAN_LINE_NUM		Small Int Not null	Transaction Line Number	Sequential number of each scan or element in a transaction.	3 2
MIC		Char (3) Not null	Manufacturer Identification Code	Manufacturer Identification Code used to uniquely identify a vendor or brand within a department.	154 128 217
TRAN_TYPE		Char (1) Not null	Transaction Type	An identifier for a purchase or return type of transaction or line item	P R
ORIG_PRICE		Decimal(7,2) Not null	Original Price	The original unit price of an item before discounts.	20.00 6.00
SALE_PRICE		Decimal(7,2) Not null	Sale Price	The discounted unit price of an item.	15.00 2.64 6.00
TRAN_AMT		Decimal(7,2) Not null	Transaction Total Amount	The total pre-tax dollar amount the customer paid in a transaction.	15.00 2.64
TENDER_TYPE		Varchar (5) Not null	Tender Type	The type of payment a customer used to complete the transaction.	BANK DLRD DAMX
SKU	Index, Foreign key (references SKU table)	Char (10)	Stock Keeping Unit	Unique identifier for an item, identifies the item by size within a color and style for a particular vendor.	6107653 9999999950