

Remote Desktop Access – Partner Universities

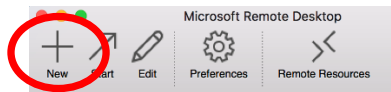
The following connections assume you have requested and received access to the University of Arkansas Enterprise System resources.

STEP1: Connecting to the desktop

Mac Users

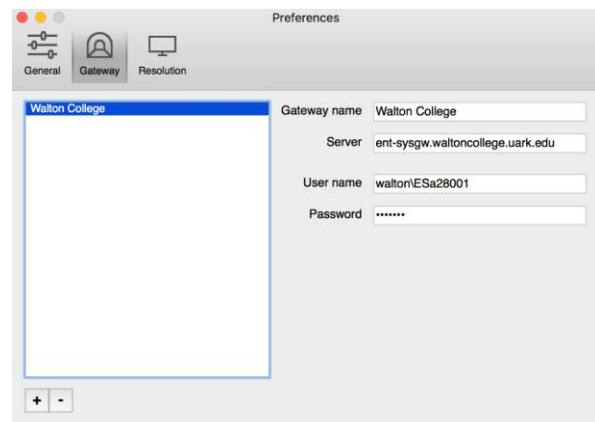
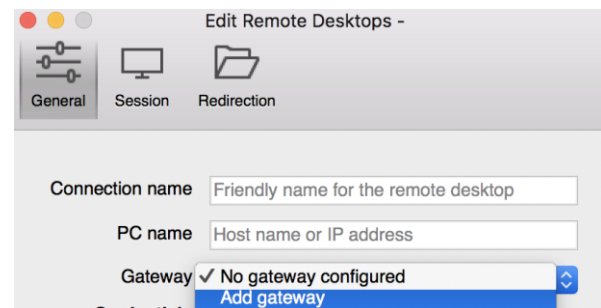
Installing Remote Desktop Application

1. Download the Microsoft Remote Desktop App 8.0 for Mac, available in the App Store.
2. Launch the app and in the My Desktops window, press the New button from the menu.



Gateway/Remote Configuration

3. Configuring the gateway will allow you to connect to Walton College. This gateway address will stay the same regardless of what system you are connecting to. Click on the dropdown menu in the Gateway box and select **Add gateway**.
4. In the Gateway Name box, type **Walton College**.
5. In the Server Name type **ent-sysgw.waltoncollege.uark.edu**.
6. Enter the username and password you were given when you requested access (**NOTE: The Username now is on the GACL domain. Please use GACL\ instead of WALTON**). Your settings should look like the picture to the right: The General Tab should also have the PC Name: **rds.walton.uark.edu**



7. You now have access to all of the applications on the Walton College desktop. Please navigate to the system of your choice for instructions on how to open that application.

Windows Users

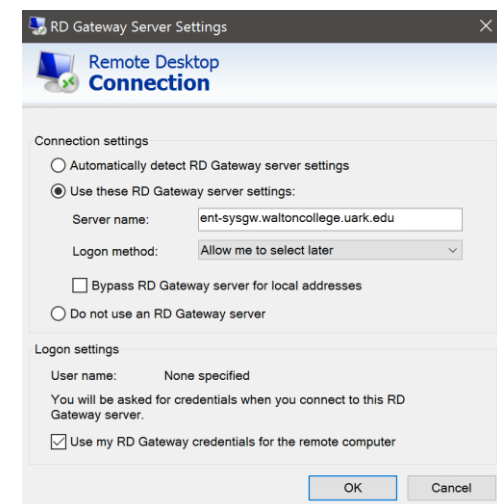
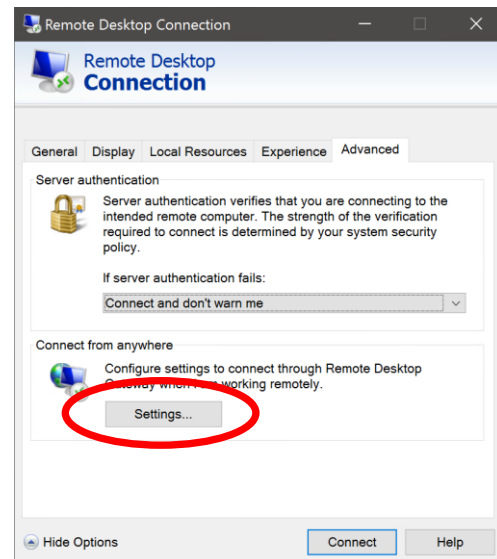
Installing Remote Desktop Application

1. Download the Microsoft Remote Desktop App for Windows, available in the Microsoft Store.
2. Launch the app and click the **Show Options** button at the bottom of the window.

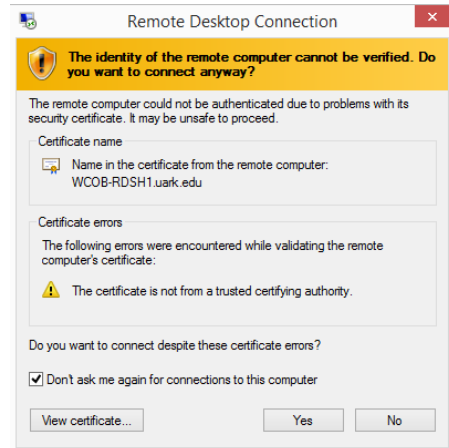


Gateway/Remote Configuration

3. Configuring the gateway will allow you to connect to Walton College. This gateway address will stay the same regardless of what system you are connecting to. In the Remote Desktop Connection app, once you've dropped down the Show Options menu, click on the **Advanced** tab. In the Advanced tab, click **Settings**.
4. In Connection settings, select the option that says **"Use these RD Gateway server settings"**.
5. In the Server Name box, type **ent-sysgw.waltoncollege.uark.edu**.
6. In the Logon settings area, check the box that says **"Use my RD Gateway credentials for the remote computer"**.
7. When you finish, your screen should look like the picture to the right:
8. Click **OK** to return to the main Remote Desktop Connection window and click on the **General** tab.
9. The general tab should contain the following information: **Computer:** **rds.walton.uark.edu**, **Username:** **GACL**
10. You now have access to all of the applications on the Walton College desktop. Please navigate to the system of your choice for instructions on how to open that application.

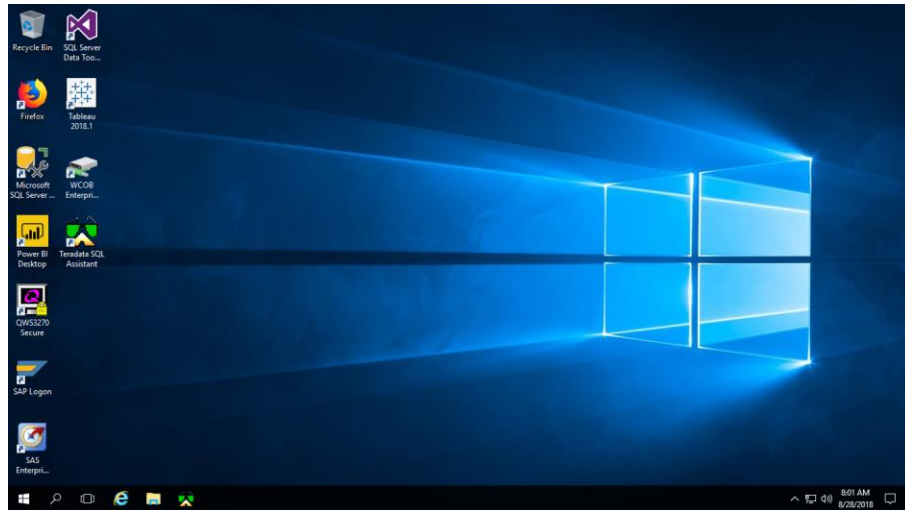


11. Accept the certificate by clicking on the Yes button. Click checkbox “Don’t ask me again for connections to this computer”.



STEP2: Remote Desktop View

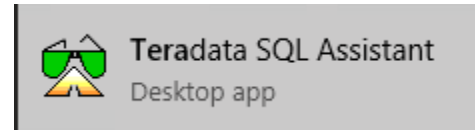
For both MAC and Windows users, now the remote desktop is shown. From the desktop click on the icons for which access was granted.

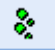


STEP3: Systems Applications

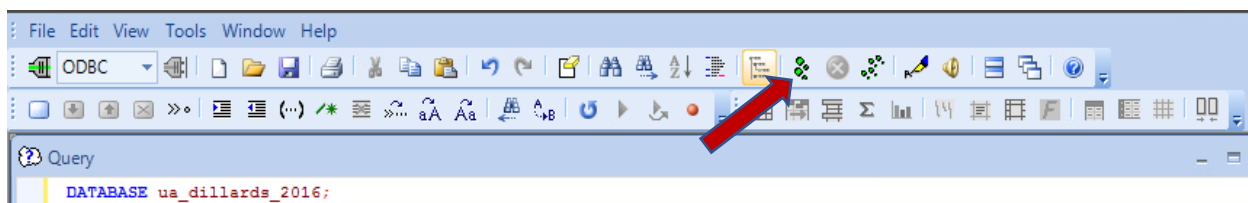
Teradata Application

1. From the Desktop or Start Menu, search for and open the software Teradata SQL Assistant. You will see a Windows similar to the below screenshot.

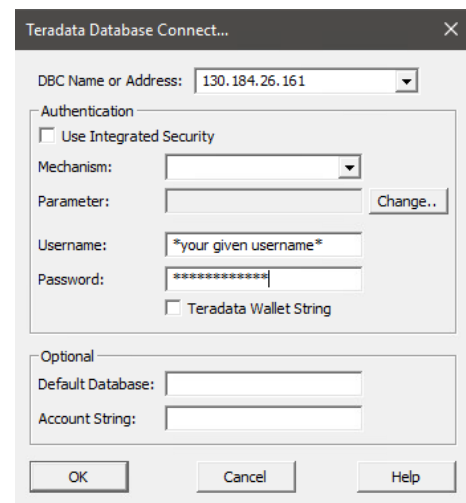


2. Copy and paste the query below onto the Query window to access the UA_Dillard's_2016 and click on the "footsteps" execute button 

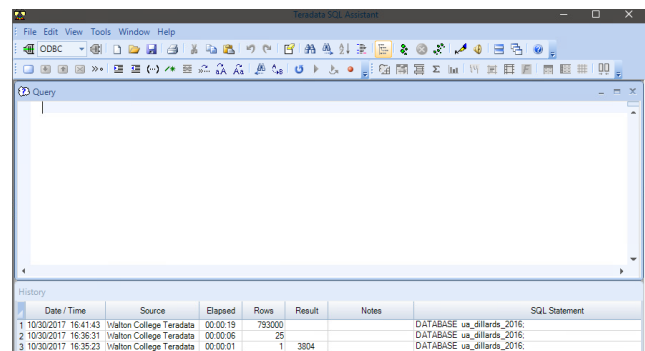
DATABASE ua_dillard's_2016;



3. A Select Data Source window will pop up to ask you the credentials to access the Dillard's database. Navigate to the **Machine Data Source** tab on top. Then double-click on **Walton College Teradata** (as shown to the right).
4. Click **OK**
5. Here you will see another pop-up window called **Teradata Database Connect...**
6. Enter the **Username:** and **Password:** provided by your instructor. Click **OK**



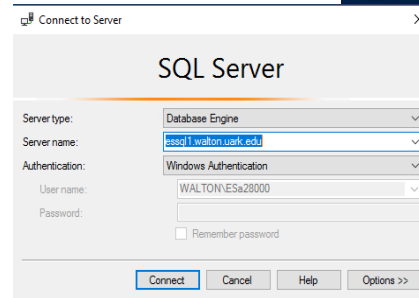
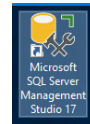
Congratulations! Now you are connected to the UA_Dillard's_2016 database and ready to query the data needed for you.



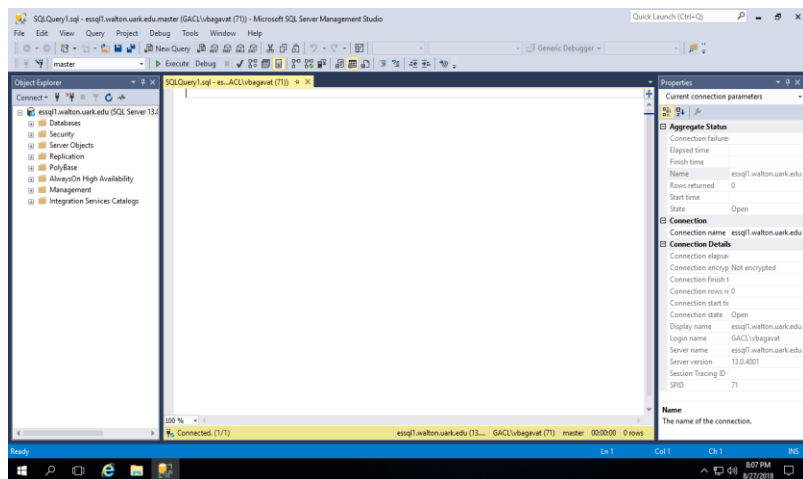
Microsoft Application

- From the Desktop or Start Menu, search for and open the Microsoft SQL Server Management studio 17.
- In the Connect to Server pop-up, verify that you have the following correct

- Server type: Database Engine
- Server name: essql1.walton.uark.edu
- Authentication: Windows Authentication
- User name: UARK Supplied
- Password: UARK Supplied



- You will see a Windows similar to the below screenshot. You are now connected to Microsoft SQL Server Management Studio 17.



SAP Application – Need to do

Access to the HANA platform is currently under development.

IBM Application – Need to do

Access to IBM z-13 is currently under development. Will update.

Note: To exit the remote desktop, go to the **Start** menu and select **Log Off**.

Revision history

Date	Resource Name	
10/02/2017	Anna Grace Franklin & Ron Freeze	Document created
08/01/2018	Ron Freeze	Document updated
08/20/2018	Venkataraman B	Document updated