

BUSINESS FORECAST

PRESENTED BY: CENTER FOR BUSINESS & ECONOMIC RESEARCH



UNIVERSITY OF
ARKANSAS

Sam M. Walton
College of Business

THANK YOU TO OUR 2018 BUSINESS FORECAST SPONSORS

PRESENTED BY: CENTER FOR BUSINESS AND ECONOMIC RESEARCH

WALTON PRESENTING PARTNER



WALTON ACADEMIC PARTNERS

GREENWOOD
GEARHART



SMITH | HURST
PLC



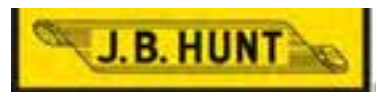
WALTON CORPORATE PARTNERS



KUTAKROCK



WALTON BUSINESS PARTNERS



MITCHELL
WILLIAMS



WALTON MEDIA PARTNERS





UNIVERSITY OF
ARKANSAS

Sam M. Walton
College of Business
Center for Business & Economic Research

Business Forecast 2018
Friday, January 26, 2018
11:30 a.m. - 1:30 p.m.
Schedule of Events

Welcome	Joseph Steinmetz , Chancellor University of Arkansas
Special Remarks	Matt Waller , Dean Sam M. Walton College of Business, University of Arkansas
2017 Contest Awards	Mervin Jebaraj , Director Center for Business and Economic Research Sam M. Walton College of Business, University of Arkansas
State and Regional Forecast	Mervin Jebaraj
Introduction of Keynote Speaker	Jim Walton Chairman and CEO Arvest Bank Group
Keynote Speaker	Michael Milken Chairman Milken Institute
Question and Answer Session	Ross DeVol Walton Fellow Walton Family Foundation
Recognitions and Announcements	Matt Waller

Business Forecast 2018 is in association with the National Association for Business Economics (NABE).

Please use Twitter hashtag #BF2018 for this event.



Michael Milken, Chairman of the Milken Institute, has been at the forefront of successful initiatives in medical research, education, public health, and access to capital for more than four decades. Fortune called him "The Man Who Changed Medicine" and Forbes listed him among "Visionaries Reimagining Our Children's Future." In 1982 he formalized philanthropy by co-founding the Milken Family Foundation. The Milken Institute School of Public Health at George Washington University recognizes an Institute gift. As a financier, Mike is often said to have revolutionized modern capital markets by pricing and rewarding risk more efficiently. The thousands of companies he financed created millions of jobs. A graduate of the University of California, Berkeley, Mike earned his MBA at the Wharton School. He and his wife Lori are mem-

bers of the Giving Pledge and Founding Donors of the National Museum of African American History and Culture at the Smithsonian Institution. They have three children and ten grandchildren and will celebrate their 50th wedding anniversary in 2018. For more information see www.mikemilken.com.



Ross DeVol is a Walton Fellow, Walton Family Foundation, a program enlisting subject-matter experts to conduct research and develop best practices that support the foundation's philanthropic efforts. DeVol studies national economic trends and how they impact the American heartland. He is assessing opportunities for regional innovation ecosystems which foster job creation, wage gains and economic growth for the non-coastal areas of the nation. DeVol will help identify the tools needed for a stronger entrepreneurial ecosystem in the American heartland. He will work with universities, colleges, the business community, public policy leaders and philanthropy to analyze resources supporting the startup community and identify workforce and talent gaps. DeVol is former chief research officer for the Milken

Institute where he spent nearly 20 years, an economic think tank headquartered in California. He oversaw research on international, national and comparative regional growth performance; access to capital and its role in economic growth and job creation; and health-related topics. He has been ranked among the "Superstars of Think Tank Scholars" by International Economy magazine.



Mervin Jebaraj is the director of the Center for Business and Economic Research. He was previously the assistant director at the center, where he has worked since 2007. During his time at the center, he has been instrumental in creating and executing economic studies for clients such as the Arkansas Economic Development Commission, the Northwest Arkansas Council, the Walton Family Foundation, Arvest Bank, the University of Arkansas and many others. His work has been noted by the state's business media. The Northwest Arkansas Business Journal recognized him as one of its "Fast 15" and Arkansas Business put him on its list of "20 in their 20s." He is an exceptional source of business and economics-related expertise that journalists and business people alike rely on to understand how national and regional issues impact Northwest Arkansas and Arkansas as a whole. He makes presentations that share the

center's expertise directly to over 5,000 individuals annually and tens of thousands more hear and see his economic analysis and commentary through TV, radio and print media.

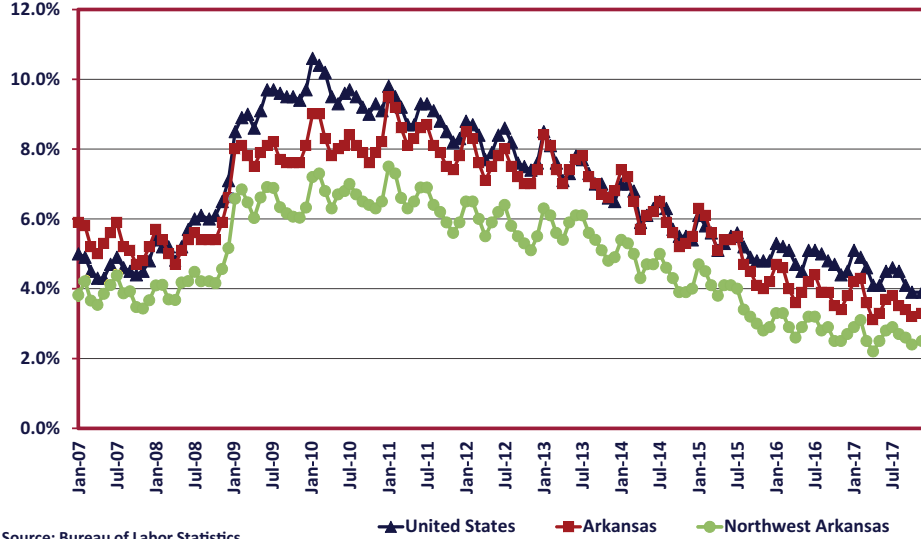


The Arkansas Economy in 2018

Mervin Jebaraj, Director
Center for Business and Economic Research
January 26, 2018

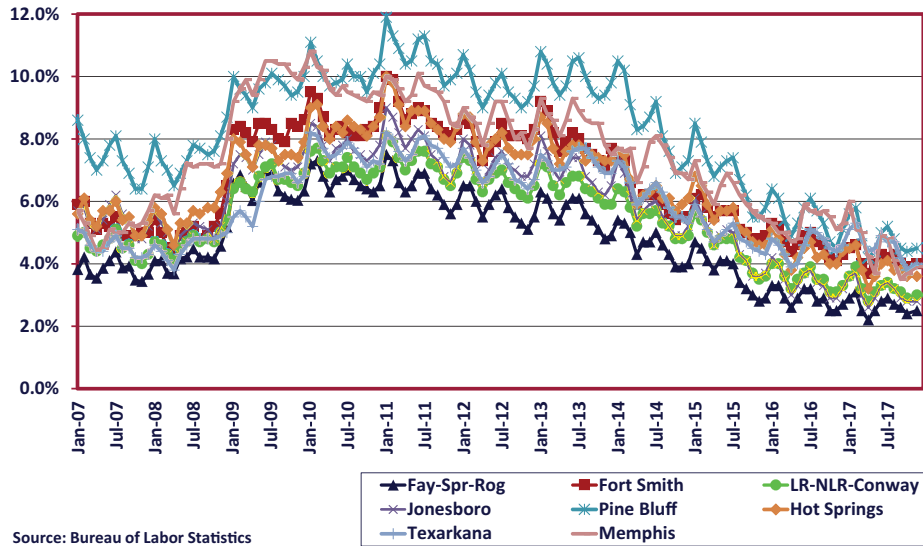
Twitter: #BF2018
@uawaltoncollege @MervinJebaraj

Unemployment Rates, Not Seasonally Adjusted



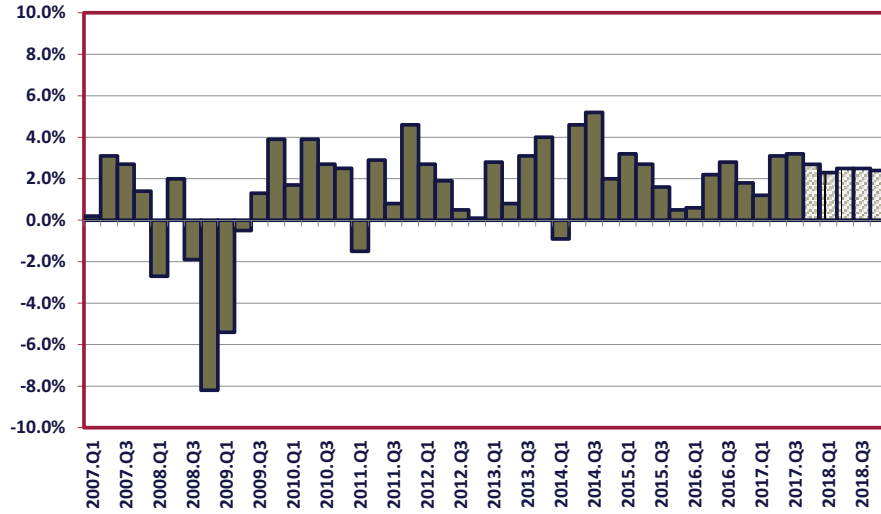
Source: Bureau of Labor Statistics

Unemployment Rates, Not Seasonally Adjusted



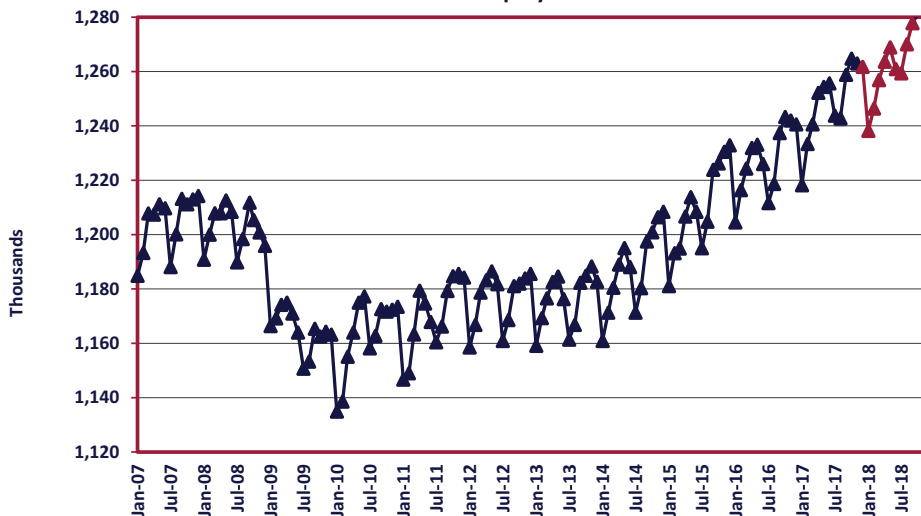
Source: Bureau of Labor Statistics

Real U.S. Gross Domestic Product Growth Rate



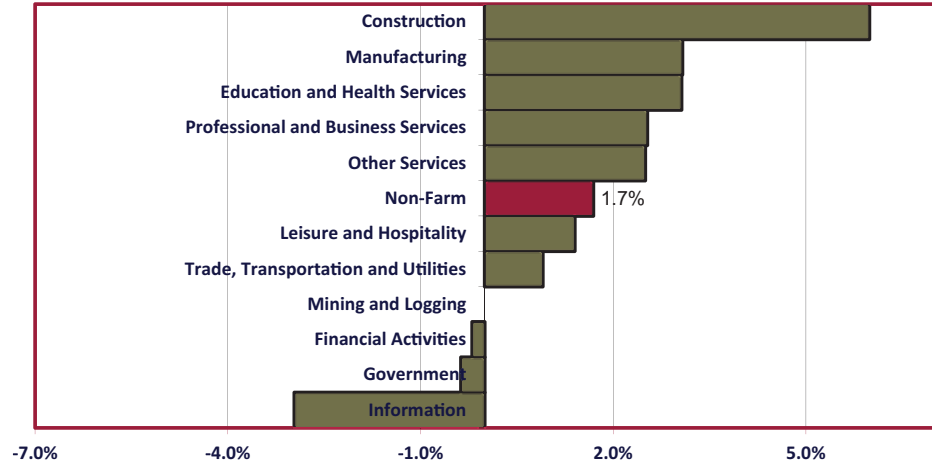
Source: U.S. Commerce Department, Bureau of Economic Analysis, December 2017 NABE Outlook

Arkansas Non-Farm Employment Forecast



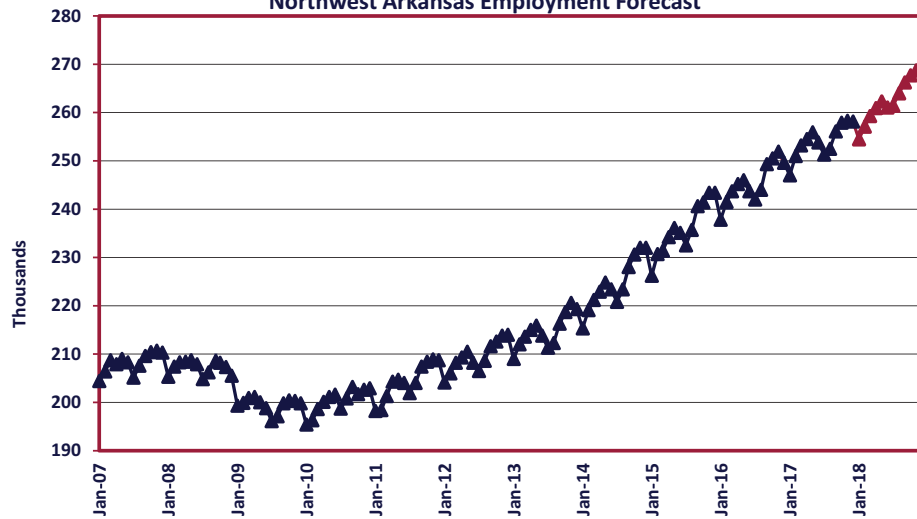
Source: Bureau of Labor Statistics, December 2017 CBER Forecast

**Change in Arkansas Employment by Sector
November 2016 - November 2017**



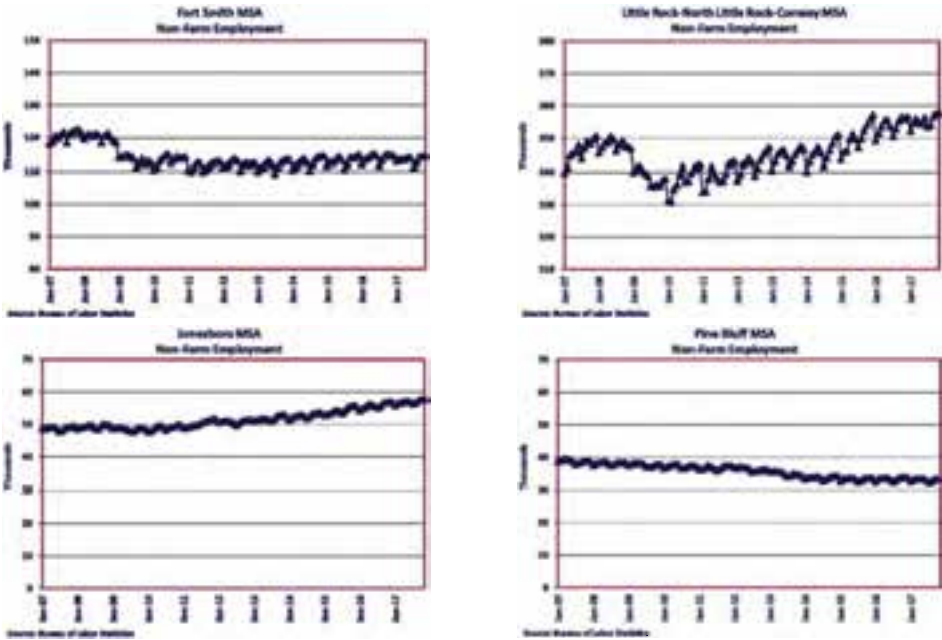
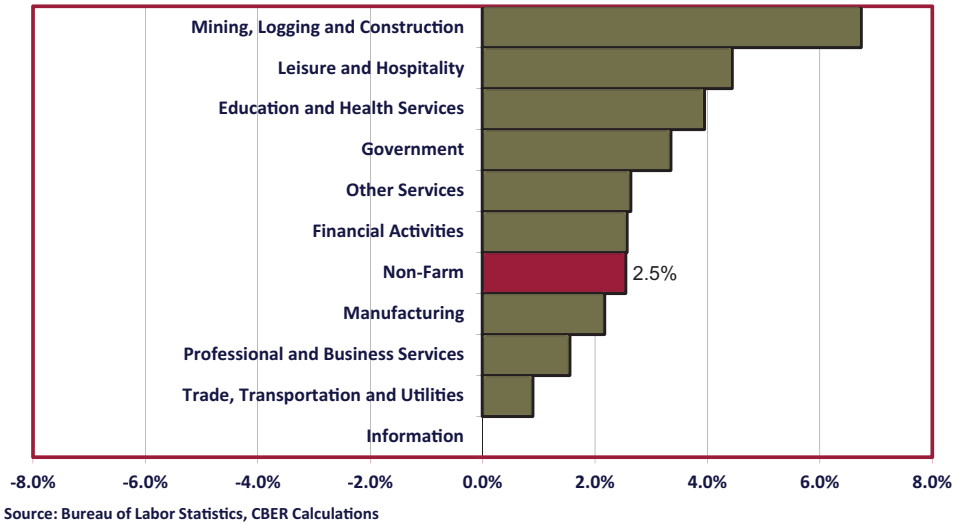
Source: Bureau of Labor Statistics, CBER Calculations

Northwest Arkansas Employment Forecast

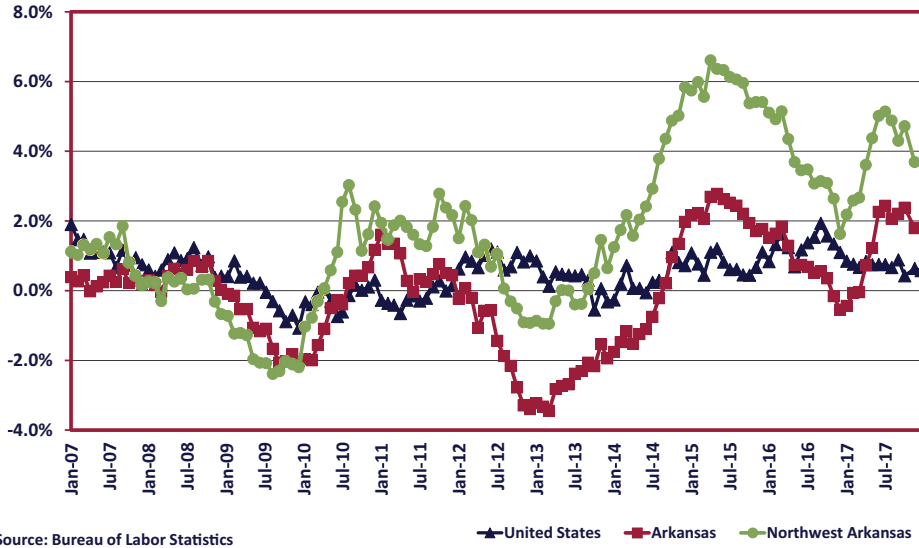


Source: Bureau of Labor Statistics, December 2017 CBER Forecast

**Change in Northwest Arkansas MSA Employment by Sector,
November 2016 - November 2017**

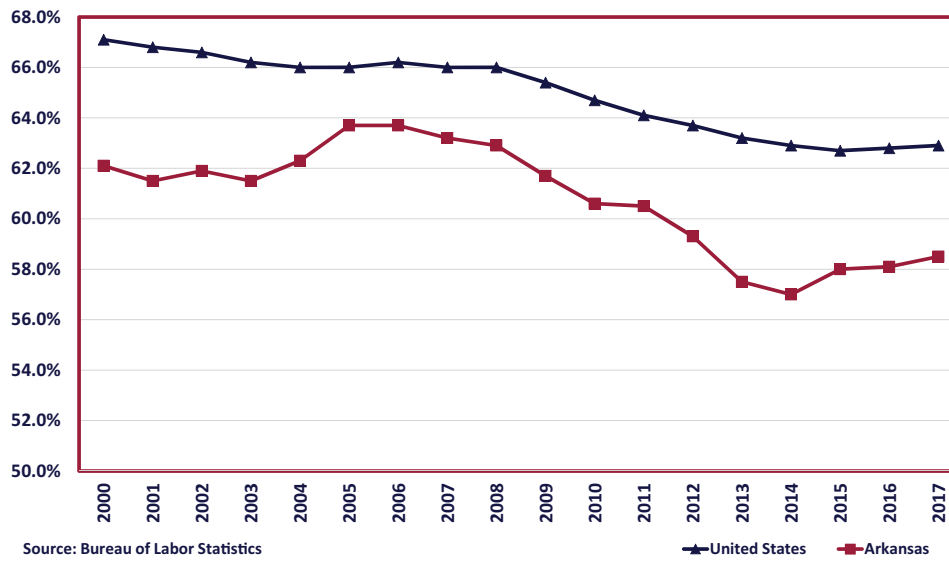


Labor Force, Year Over Year Percent Change

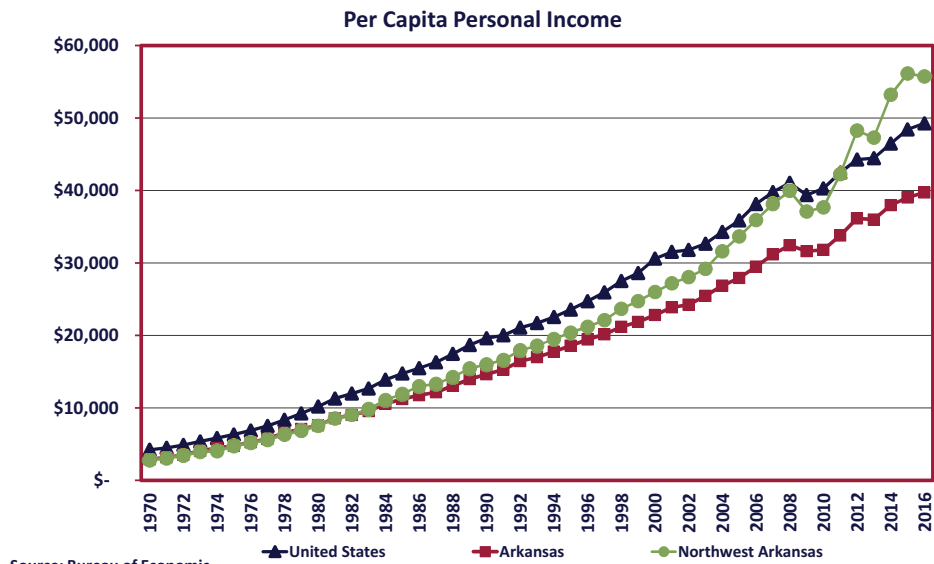


Source: Bureau of Labor Statistics

Annual Labor Force Participation Rate



Source: Bureau of Labor Statistics

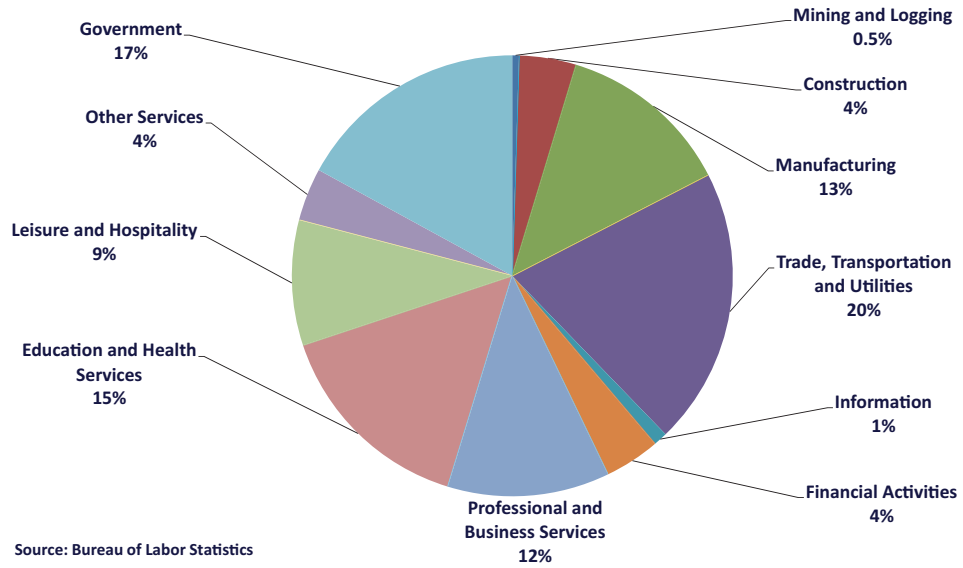


The 2018 Business Forecast Slides will be available at <http://cber.uark.edu>.

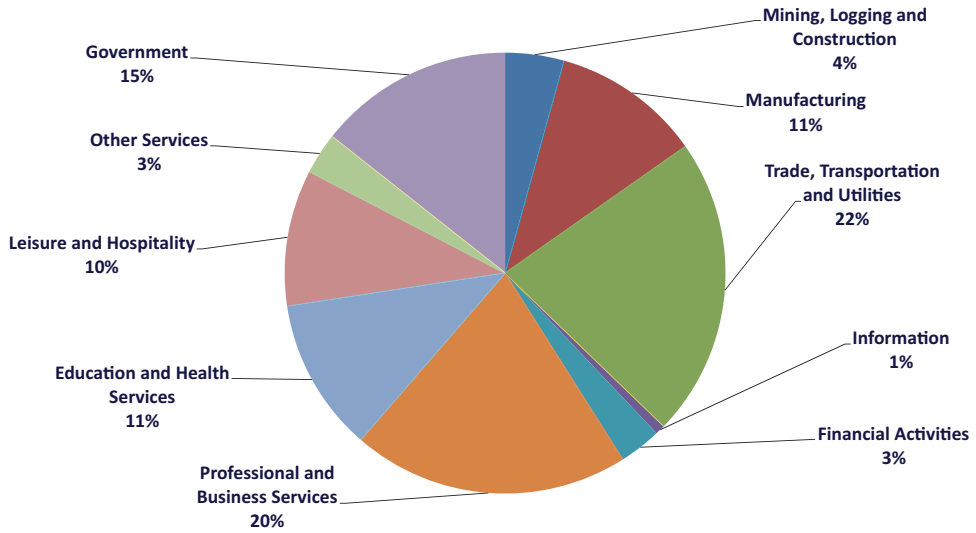
Contact at mjebaraj@walton.uark.edu
or on Twitter: @MervinJebaraj

The Arkansas Economy in 2018: Appendix

Arkansas Employment by Sector - November 2017

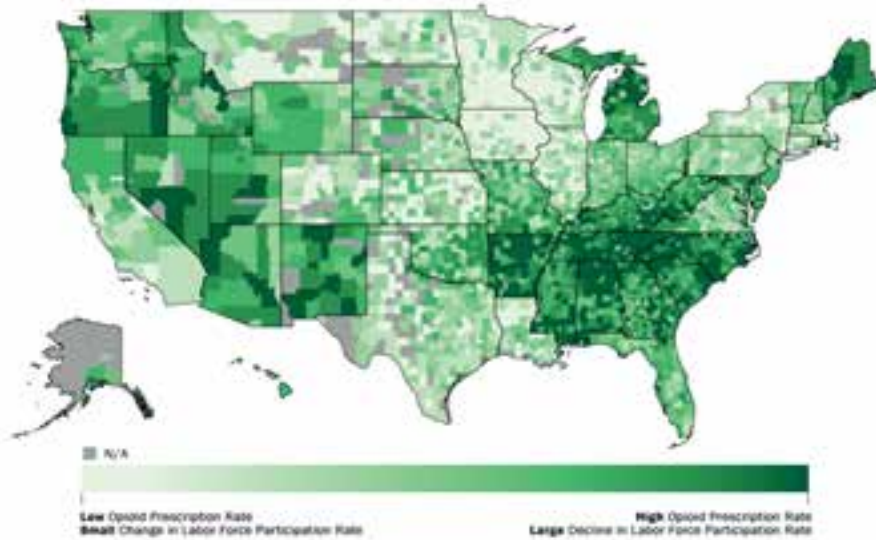


Northwest Arkansas Employment by Sector - November 2017



Source: Bureau of Labor Statistics

Combined Effect of Opioid Prescription Rates and Change in Labor Force Participation Rate
Prime Age Adults, Ages 25-54



Note: Data on change in state-level labor force participation is from CPS, years 1999-2001 and 2014-2018 for prime age adults and county-level.

Female Labor Force Participation Rates
Source: U.S. Census Bureau

