

# Directions, Map and Parking at Harmon

## Parking Instructions for the Harmon Avenue Parking Facility

The hourly rate is \$1.00 per 48 Minutes, up to \$12.50 per day.

### Entering the Parking Deck

- Enter the Harmon Avenue Parking Facility on the 1st, 2nd, 4th, or 6th floor.  
1st floor entrance is located on Duncan Ave.  
2nd & 4th floor entrances are located on Williams Street.  
6th floor entrance is located on Harmon Ave.
- Press the green button at the gate and take the ticket from the machine.
- Enter the parking deck and park anywhere.

### Exiting the Parking Deck

- When you return to the deck, you will enter on the 6th floor.
- There is a payment station located on the 1st and 6th floors by the elevators.
- Insert the ticket into one of the payment machines.
- You will be prompted with your total. You can pay with cash, coins, or credit cards. (The machines do not accept American Express or the new \$5.00 bills.)
- You will then receive your ticket back, which you will take to your car.
- Pull up to one of the exits on the 1st, 2nd, 4th or 6th floor.
- Insert your ticket into the second machine.
- If you have any problems, push the "Press for Assistance" button and you will be connected to the parking facility controller.

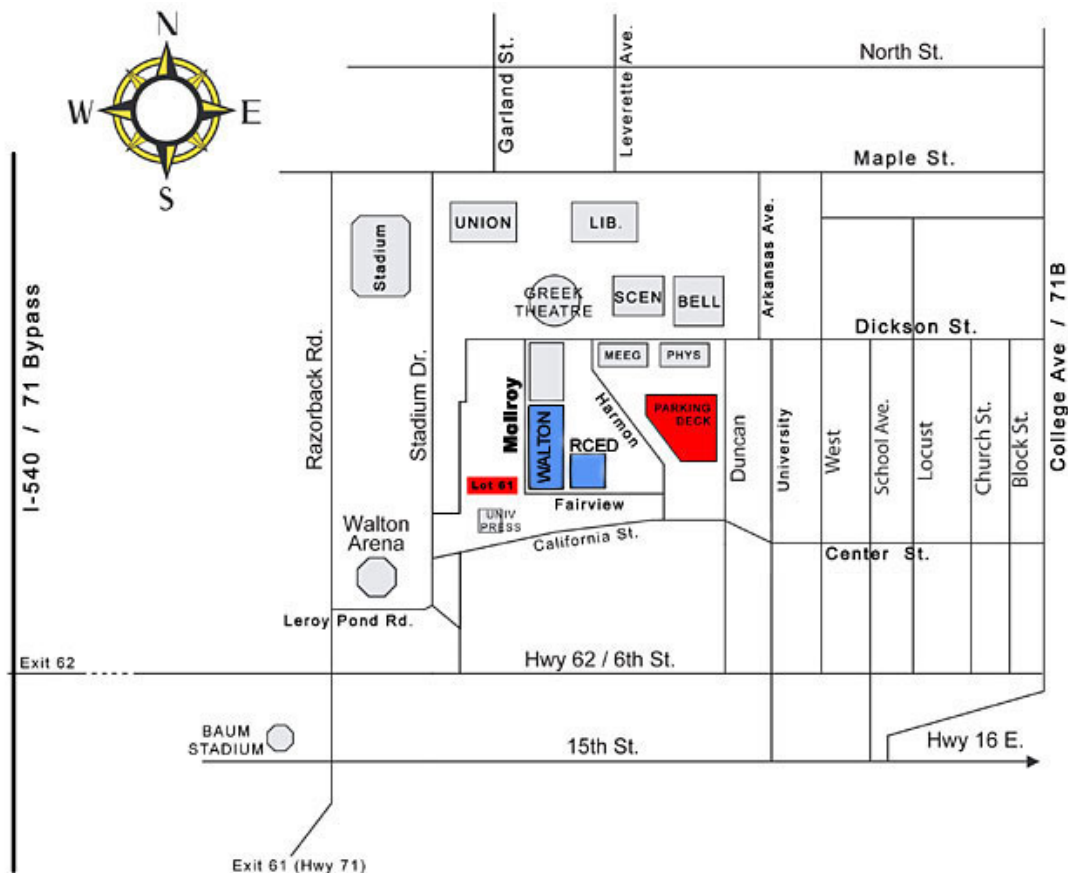


[Today's Events](#)
[Facilities](#)
[Reservations](#)
[Equipment](#)
[Catering](#)
[Policies](#)
[Directions](#)
[About](#)

[Walton College](#)

## Directions to the Reynolds Center

The Donald W. Reynolds Center for Enterprise Development (RCED) is on the campus of the University of Arkansas, Fayetteville. It is highlighted in blue on the map below. Specific driving directions appear at the bottom of the page, including parking details.



### Driving Directions from I-540

[hide info](#)

- If you are coming south from Springdale, Rogers, or Bentonville, take Exit 62 (Farmington and University of Arkansas sign, Hwy 62, 16, 180)
- Take a left at the stop light onto 6th Street.
- You will go under the overpass, keep going straight on Sixth Street, until you reach the Razorback Road stop light (you will see a "University of Arkansas" brick entrance sign at the corner of Razorback Road and Sixth Street)
- Take a left onto Razorback Road.
- Take the first right onto Leroy Pond Road (you will pass by Bud Walton Arena sitting on the left hand side)
- At the stop sign, take a left onto California Drive.
- When you come to the stop sign, continue straight, California Drive runs into Center Street.
- You will pass the Fayetteville Boys and Girls Club on your right.
- Turn left onto Harmon Street (it will be your first street on the left at the top of a small hill)
- If you are visiting, take a left on Fairview Street. Take the second entrance on your left. This small parking lot is marked in red in the above map. Look for the space marked "Reynolds Center."
- For event parking, you may park in the large parking deck marked in red in the above map.
- Shuttle services are also available for events.

### Driving Directions from 71B (College Ave.)

[hide info](#)

- Take College Ave. to Dickson Street.

- Head West on Dickson towards the Walton Arts Center
- Turn left on West Street
- Come to the stop sign, and turn right on Center Street
- Go straight through the light at the Duncan Street intersection
- Almost immediately after the light, turn right on Harmon Ave.
  
- If you are visiting, take a left on Fairview Street. Take the second entrance on your left. This small parking lot is marked in red in the above map. Look for the space marked "Reynolds Center."
- For event parking, you may park in the large parking deck marked in red in the above map.
- Shuttle services are also available for events.