

- [BELLA VISTA](#)
- [BENTONVILLE](#)
- [ROGERS](#)
- [SPRINGDALE](#)
- [FAYETTEVILLE](#)

- [Home](#)
- [For Buyers](#)
- [For Sellers](#)
- [Contact](#)
- [About](#)



| |
|-----------------|
| Search Site |
| Subscribe Email |

[SEARCH FOR HOMES](#)

[HOME EVALUATION](#)

Find out what's happening in Northwest Arkansas right now on Twitter...

A cartoon penguin mascot with a yellow beak and feet. It has the text "#NWArk twubs #NWAsocial" on its chest. Three small blue circles are above its head, suggesting a thought bubble or social media activity.

#NWArk
twubs
#NWAsocial

A green highway sign with white text and a white arrow pointing to the right. The sign is mounted on a metal post against a blue sky background.

AREA RESOURCES
& LINKS

A green highway sign with white text, mounted on a metal post against a blue sky background.

Blogs and Sites
Worth the Detour
EXIT NOW

The Skyline Report for Q2 2009 – Northwest Arkansas Real Estate

August 14th, 2009 categories: [Market Conditions](#)



0
tweets
tweet

The Northwest Arkansas Skyline Report for the second quarter of 2009 sponsored by Arvest Bank is out. The report collates and measures some key statistics in the Northwest Arkansas Real Estate Market... check out this quarter's key highlights below. If you are looking for a bit more detailed (and useful in my opinion) monthly report please check out our [monthly market data](#) or subscribe to our updates.

From the Arkansas Business Journal (written by: Susannah Patton)

New residential construction in northwest Arkansas in the second quarter of 2009 continued at a lower pace than in previous years **but picked up slightly from the first quarter**. The numbers come from the second-quarter residential Skyline Report, commissioned by Arvest Bank Group Inc. and compiled by the Center for Business & Economic Research in the Walton College of Business at the University of Arkansas. In the second quarter, 266 residential building permits were issued, an increase from the 185 issued in the first quarter but a decrease from the 416 permits issued in the same period last year. Benton County accounted for 146 permits, while Washington County accounted for 120. The number of complete but unoccupied houses declined in the second quarter as 382 houses in active subdivisions became occupied. The absorption rate is an increase from the first three months of this year, when 277 homes became occupied. There were 1,247 homes sold in the second quarter, a decline of 4.6 percent from the second quarter of 2008.

The Skyline Report pulls it's data from multiple sources so is very accurate in it's conclusions. If you'd like to see more about the Skyline Report and what's in it, please [contact me](#) and I'll be happy to get you a copy of the latest report. Remember to come back the first week of each month and read EXIT Pro Realty's conclusion's on the current state of the housing market in Northwest Arkansas.

[Share This](#)



Other Great Reads:

1. [The Skyline Report – Northwest Arkansas Residential Real Estate Market Report for Third Quarter 2008](#)
2. [Northwest AR Home Prices and Market Report for November '08](#)
3. [Northwest Arkansas Home Prices and Market Report – April 2009](#)
4. [Northwest Arkansas Home Prices and Market Report – March 2009](#)



Like what you're reading?

Subscribe to my feed to get the latest.

or  [Subscribe with a feed reader](#)

This entry was posted on Friday, August 14th, 2009 at 12:46 pm and is filed under [Market Conditions](#). You can follow any responses to this entry through the [RSS 2.0](#) feed. You can [leave a response](#), or [trackback](#) from your own site.

Comments

There are no comments posted yet. [Be the first one!](#)

Post a new comment

Enter text right here!

Comment as a Guest, or login:

Name

Displayed next to your comments.

Email

Not displayed publicly.

Website (optional)

If you have a website, link to it here.

Subscribe to

Submit Comment


Categories

- [Top Posts](#)
- [Fun Things to Do](#)
- [Guest Posts](#)
- [Resources for Professionals](#)
- [News and Events](#)
- [Market Conditions](#)
- [Selling your Home](#)
- [Buying a Home](#)
- [Neighborhoods](#)
- [Luxury Homes](#)

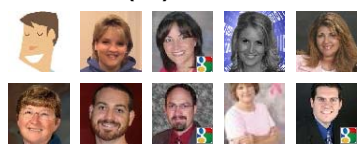
- [New Construction](#)
- [Home Owner Tips](#)
- [Northwest Arkansas Living](#)



Carnival of Real Estate

Join this site 
with Google Friend Connect

Members (10)



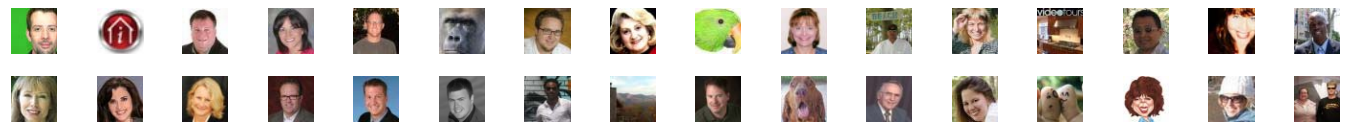
Already a member? [Sign in](#)

Copyright © 2008 Exit Real Estate 540 [Agent Login](#) Design by [Real Estate Tomato](#) Powered by [Tomato Blogs](#)

Recent Visitors



You! Join Now.



See all 10 members...

Grab This!

MyBlogLog



